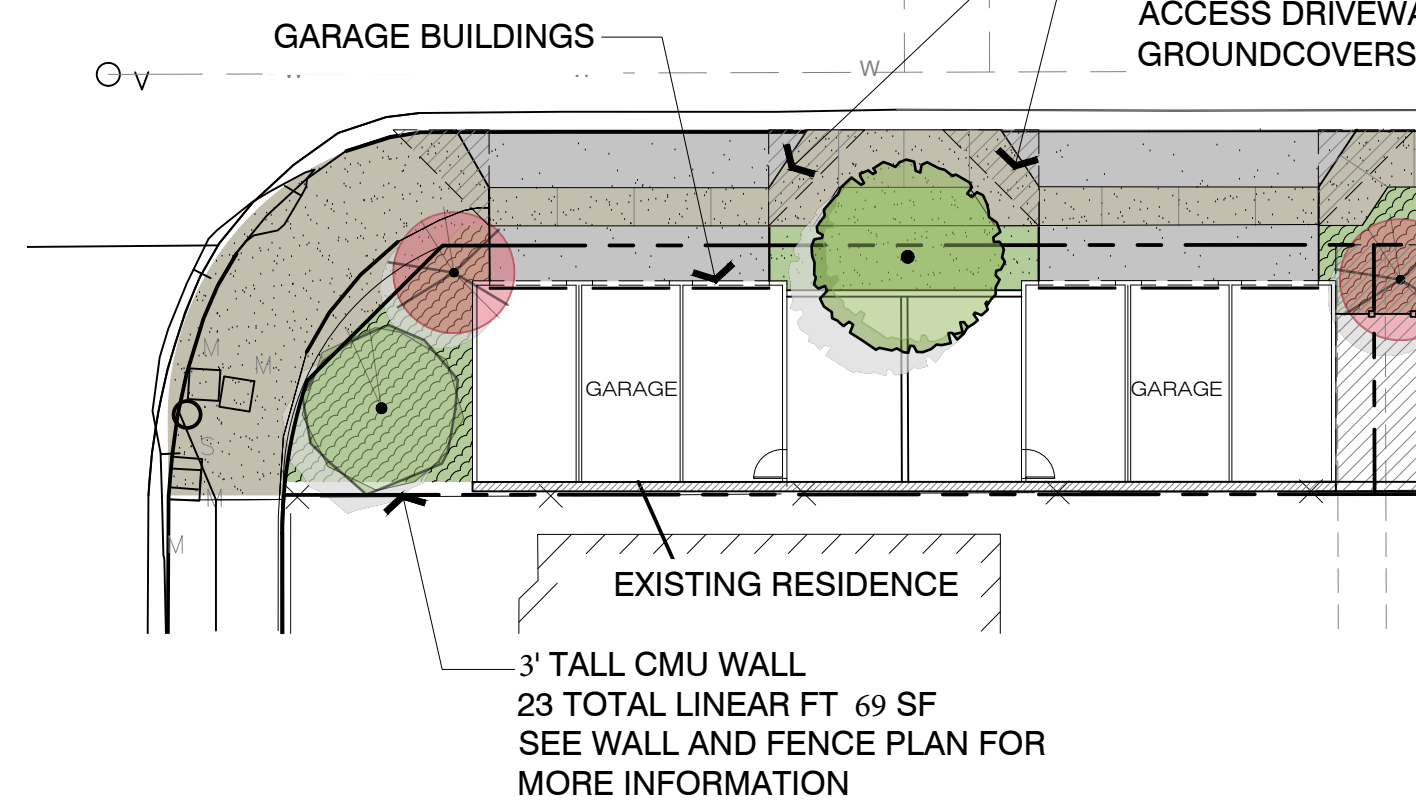




MAHOGANY AVE



CONCEPT PLANT SCHEDULE

CONTAINER SIZE	QTY.
For all trees at least 20% of all required trees must be 24-inch box size or larger and 15 gallon minimum for remaining trees.	
STREET TREES	
Liquidambar styraciflua 'Palo Alto' / Palo Alto Sweet Gum	15 Gal, M
Platanus x acerifolia / London Plane Tree	15 Gal, M
LARGE SHADE TREES	
Fraxinus angustifolia oxycarpa 'Raywood' / Raywood Ash	36" Box, M
Olea europaea 'Swan Hill' / Swan Hill Fruitless Olive	36" Box, L
Ulmus parvifolia 'True Green' / True Green Lacebark Elm	36" Box, M
COLUMNAR TREES	
Pyrus calleryana 'Capital' / Capital Callery Pear	15 Gal, M
Tristania laurina 'Elegant' / Elegant Water Gum	15 Gal, M
Zelkova serrata 'Musashino' / Musashino Japanese Zelkova	15 Gal, L
ACCENT TREES	
Cotinus coggygria 'Royal Purple' / Royal Purple Smoke Tree	24" Box, L
Lagerstroemia indica x fauriei 'Natchez' / Natchez Crape Myrtle	24" Box, M
VERTICAL ACCENT SHRUB	
Dodonaea viscosa 'Purpurea' / Purple Hopseed Bush	15 Gal., L
Podocarpus macrophyllus 'Maki' / Maki Yew Podocarpus	15 Gal., M
Westringia x 'Wynyabbie Gem' / Wynyabbie Gem Coast Rosemary	15 Gal., L
MEDIUM SHRUBS	
Asparagus densiflorus / Asparagus Fern	5 Gal., M
Callistemon viminalis 'Little John' / Little John Weeping Bottlebrush	5 Gal., L
Hesperaloe parviflora 'Dwarf Yellow' / Dark Yellow Yucca	5 Gal., VL
Lavandula stoechas / Spanish Lavender	5 Gal., L
Muhlenbergia rigens / Deer Grass	5 Gal., L
Phormium tenax 'Jack Spratt' / Jack Spratt New Zealand Flax	5 Gal., L
Stipa tenuissima / Mexican Feather Grass	5 Gal., L
Teucrium fruticans 'Compactum' / Compact Bush Germander	5 Gal., L
Westringia fruticosa 'Morning Light' / Morning Light Coast Rosemary	5 Gal., L
GROUNDCOVER	
Achillea millefolium / Common Yarrow	1 Gal., L
Bougainvillea x 'Monka' / Oo-La-La® Bougainvillea	1 Gal., L
Carex praegracilis 'Chisai' / Small California Field Sedge	1 Gal., L
Rosmarinus officinalis 'Prostratus' / Dwarf Rosemary	1 Gal., L
Senecio serpens / Blue Chalksticks	1 Gal., L



IRRIGATION SYSTEM DESIGN STATEMENT:
A PERMANENT AUTOMATIC SUB-SURFACE IRRIGATION SYSTEM SHALL BE DESIGNED AND INSTALLED TO IRRIGATE ALL PLANTING AREAS. THE IRRIGATION CONTROLLER(S) SHALL BE SMART WEATHER-BASED AND EQUIPPED FROM THE MANUFACTURER WITH WEATHER/EVAPOTRANSPIRATION (ET) SENSING CAPABILITIES TO AUTOMATICALLY ADJUST WATERING SCHEDULES AND AMOUNTS. THE DESIGN OF THE IRRIGATION SYSTEM SHALL EMPHASIZE WATER CONSERVATION AND PROVIDE EFFICIENT AND UNIFORM DISTRIBUTION OF IRRIGATION WATER. DRIP AND/OR BUBBLER IRRIGATION, OR OTHER LOW-VOLUME, LOW-PRESSURE MICRO-IRRIGATION SYSTEMS SHALL BE INSTALLED IN PLANTER AREAS TO PROVIDE WATER DIRECTLY TO THE ROOT ZONE OF PLANTS.

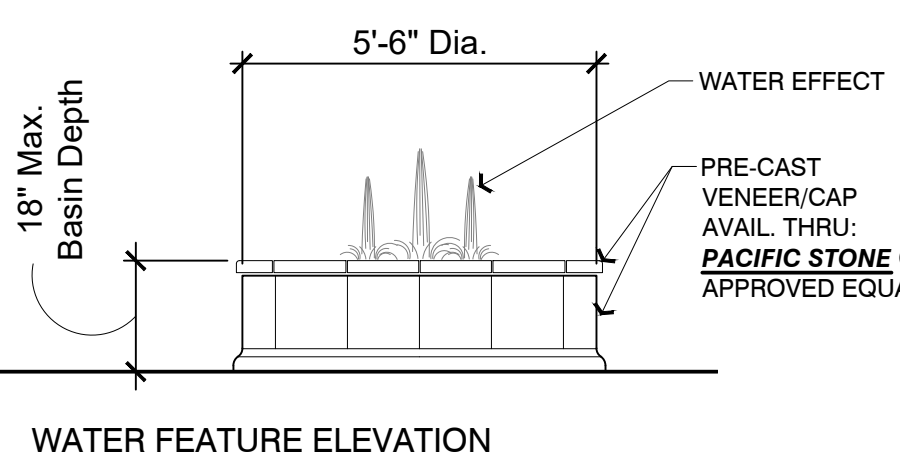
COMMON OPEN SPACE AND PRIVATE OPEN SPACE:
COMMON OPEN SPACE = 19,912 SF
Colored Concrete/Pavers = 6,640 SF + Planted Area = 13,272 SF
PRIVATE OPEN SPACE (14,883 SF)
SEE OPEN SPACE PLAN FOR REFERENCE

PLANTING QUANTITY REQUIREMENTS NOTE:
ONE TREE SHALL BE PROVIDED FOR EVERY 500 SQUARE FEET OF LANDSCAPE.
TOTAL OPEN SPACE/LANDSCAPE = 13,272 Sq. Ft.
TREES REQUIRED: 13,272 / 500 = 27 TREES
TREES PROVIDED: = 32 TREES
SHRUB REQUIRED = 13,272 / 50 = 265 SHRUBS
SHRUB PROVIDED = 13,272 x 36 o.c. max. spacing = 1,475 SHRUBS

WATER EFFICIENT LANDSCAPE NOTE:
This project will be subject to the city's water efficiency measures and will be subject to review for compliance during plan check. The use of drought tolerant plants has been emphasized.

PRELIMINARY WATER USE CALCULATIONS:
M.A.W.A. = (48.2) (0.62) [(0.55 x 13,272)] = 218,141 gal / yr.
E.T.W.U. = (48.2) (0.62) [(0.40 x 13,272)] = 195,862 gal / yr.
0.81

SIGHT TRIANGLE:
NO OBJECT SHALL EXCEED A HEIGHT OF 30 INCHES ABOVE THE TOP OF THE CURB AT BOTH SIDES OF ACCESS DRIVEWAYS. INSTALL ONLY LOW-GROWING GROUNDCOVERS AT SITE TRIANGLE LOCATIONS



Wda! Wilson Davis Associates
Landscape Architecture
2825 Litchfield Dr.
Riverside, CA 92503
Ph.(951) 353-2436

LANDSCAPE CONCEPT PLAN

WESTMINSTER DETACHED HOMES 14201 - 14205 WILLOW LANE, WESTMINSTER, CA

